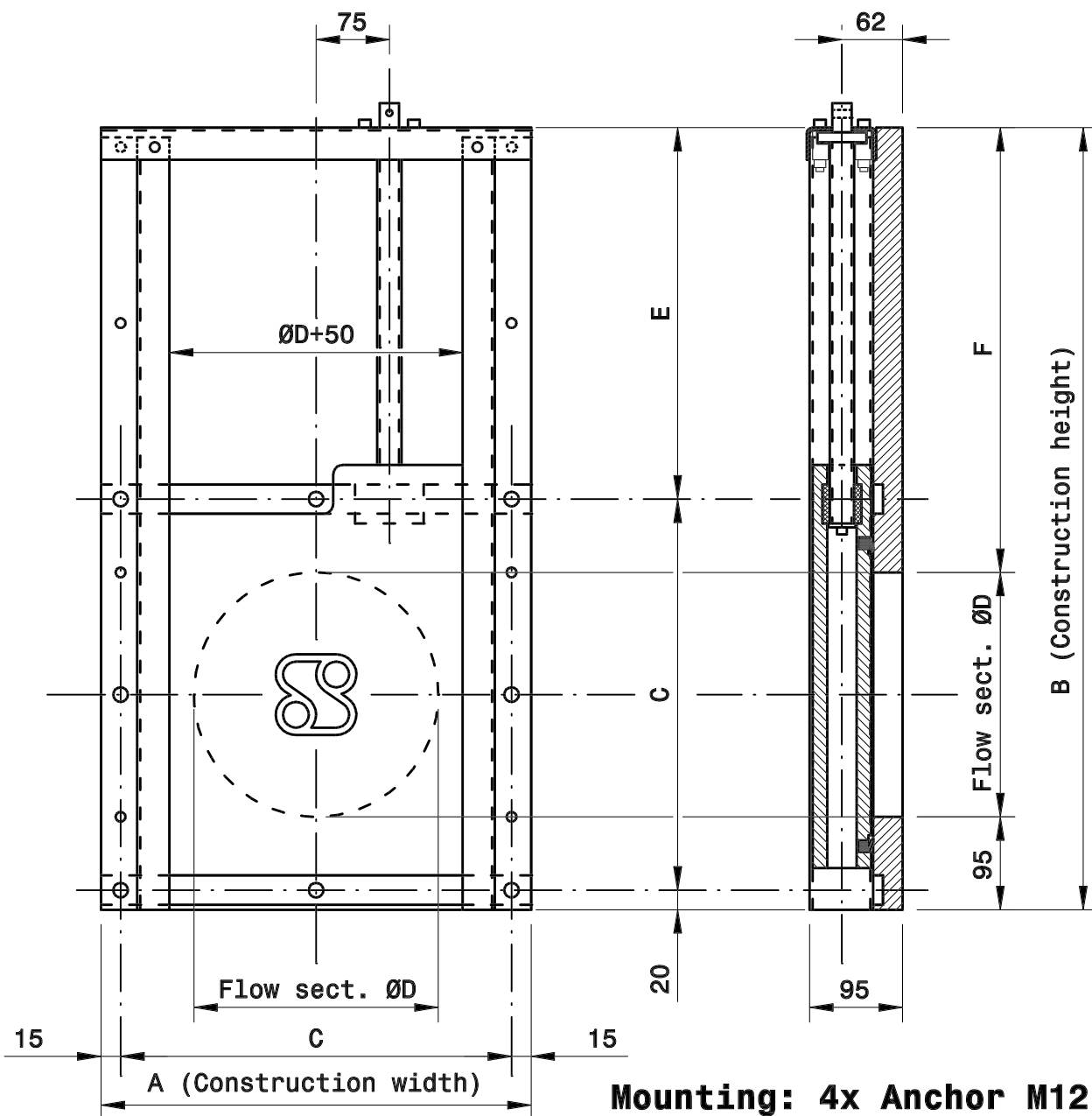
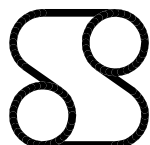


# Penstock Ø150-Ø300



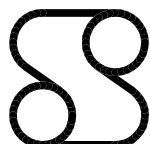
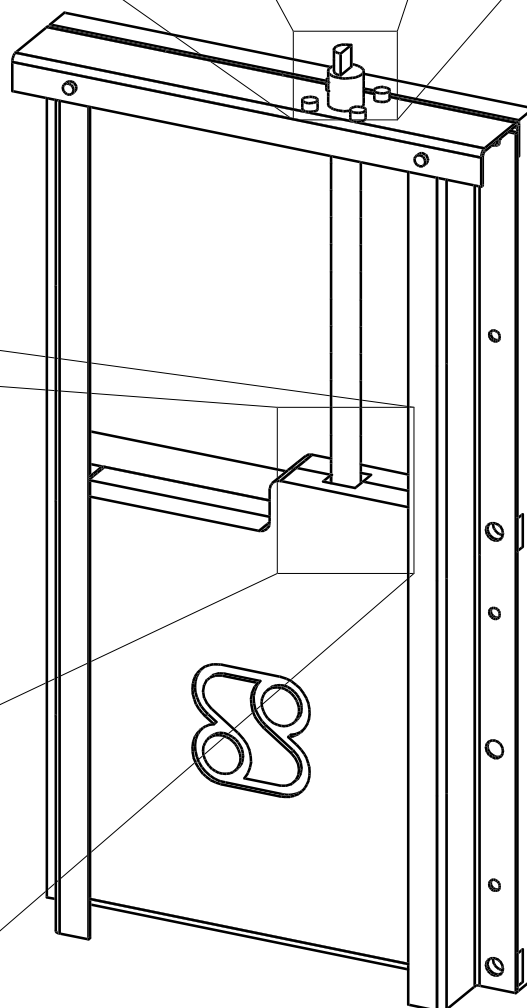
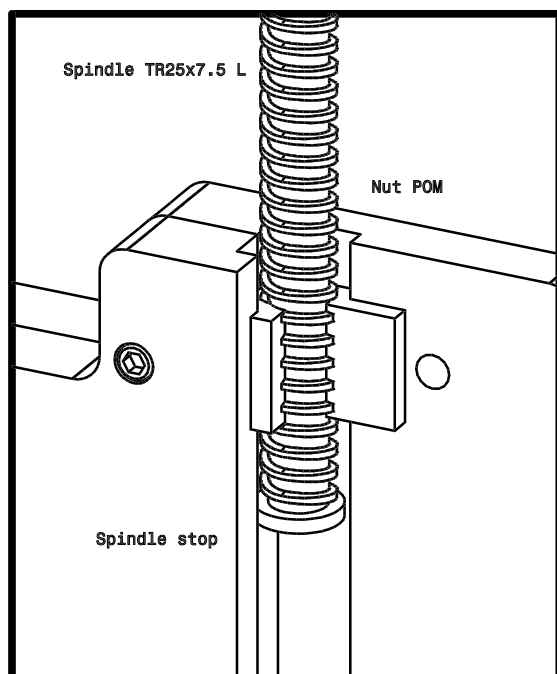
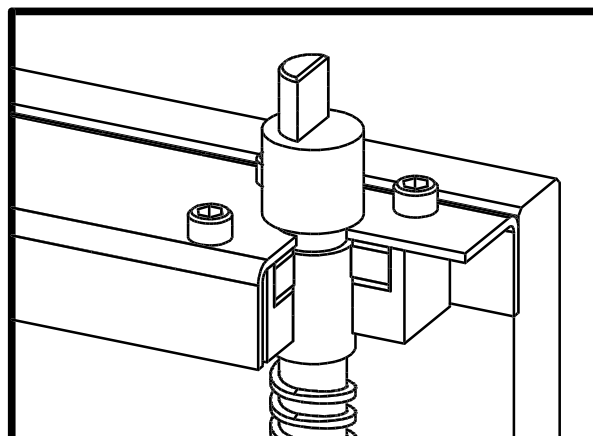
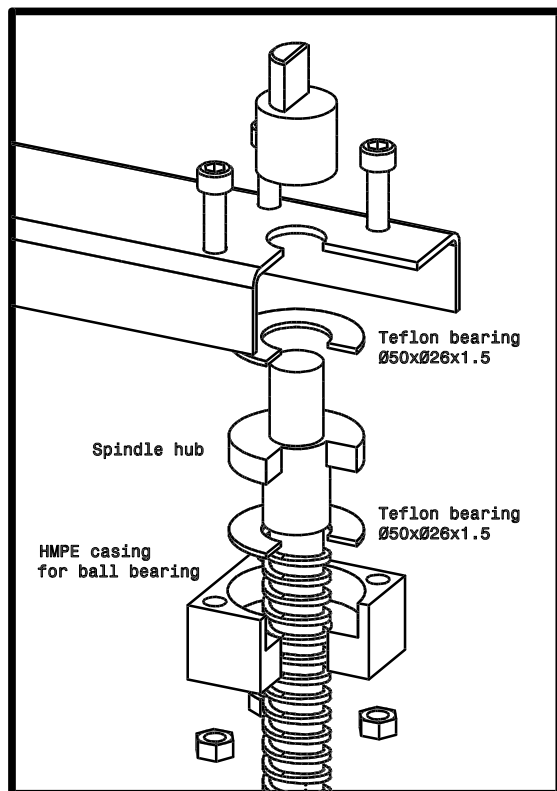
ØD	A	B	C	E	F	Weight
150	340	600	300	280	355	16 kg
200	390	700	350	330	405	22 kg
250	440	800	400	380	455	26 kg
300	490	900	450	430	505	31 kg

- Material specification**
- Slide and seat - HDPE-300
  - Spindle TR25x8L. - RVS AISI316
  - Frame - RVS AISI316
  - Threaded lift block - POM
  - Spindle bearing - PTFE (Teflon)
  - Sealing - EPDM
  - Bolts/Nuts - A4



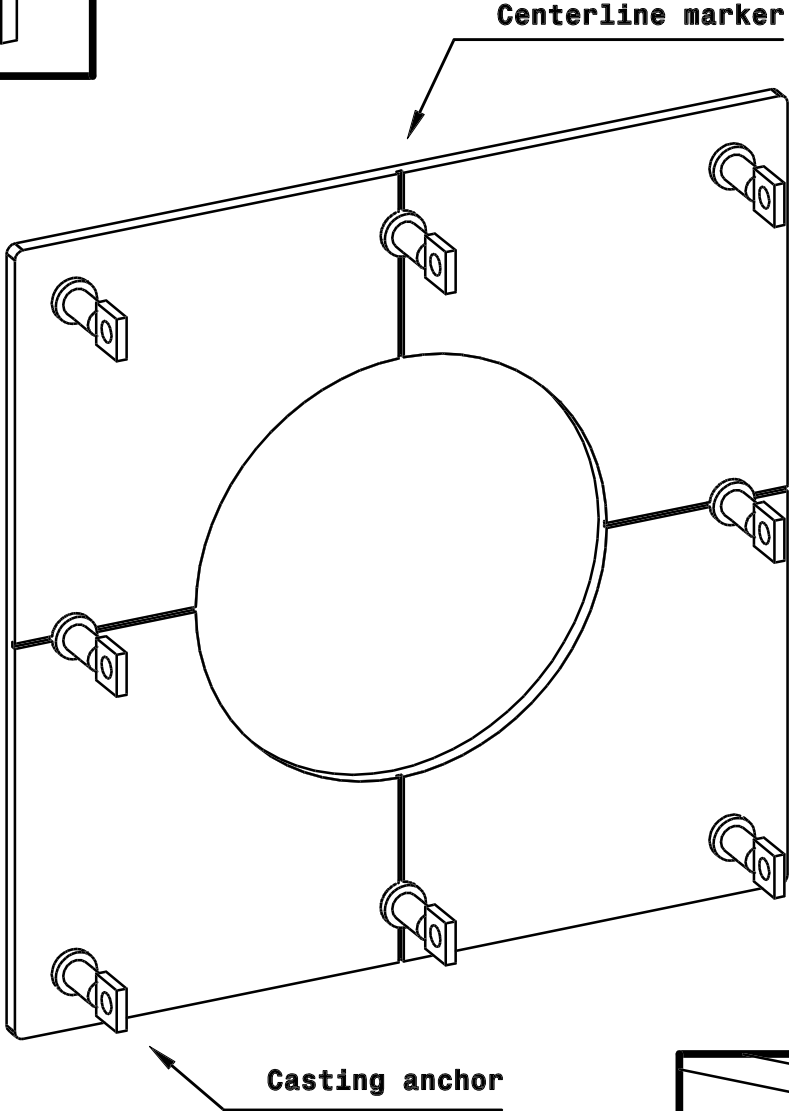
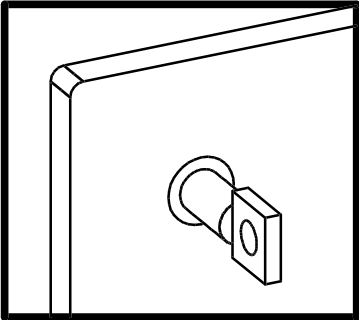
Synthesis BV - tel. +31 (0)321 380457  
 Koperweg 17 - 8251 KA Dronten

# Detail penstock Ø150-Ø300

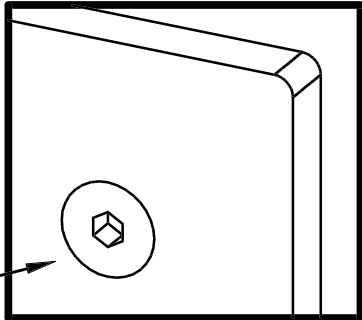


Synthesis BV - tel. +31 (0)321 380457  
Koperweg 17 - 8251 KA Dronten

# Casting Mould type IAP Ø150-Ø300



Countersunk flushhead screw;  
to be removed after removal formwork



Synthesis BV - tel. +31 (0)321 380457  
Koperweg 17 - 8251 KA Dronten